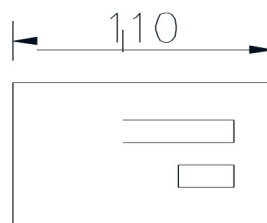
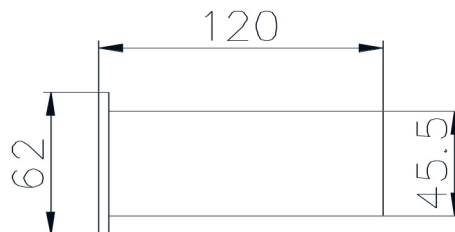


T093



◆ 安装尺寸/Mounting Dimension

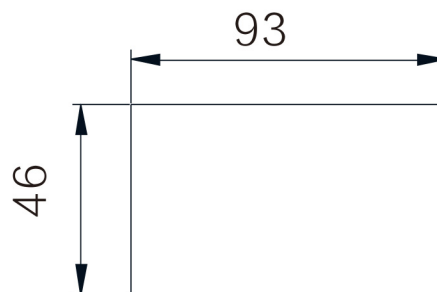


◆ 特点与用途/Features & Applications

- 用于需要将测力信号转换为数字通讯信号、标准模拟输出信号及简单控制的场合
- 模拟输出信号可选择0-20mA、4-20mA、0-10V、1-5V，数字通讯接口可选择RS485或RS232
- 双排6位LED数码管分别显示实时测量值、峰值、输出电流值、I/O状态信息
- 控制器带有上限、中限、下限界限判断功能
- I/O有4入6出，可自定义输入输出端口功能
- 可通过上位机进行驱动控制器输出，可部分替代PLC
- 控制器供电电源采用DC24V供电，压宽±5V，更加安全稳定
- 开孔式面板安装，面板面积仅110mm（宽）×62mm（高）

- Use for turning the analog force signal to digital output, the standard analog output signal and simple control of the occasion
- Analog output signal could be 0-20mA, 4-20mA, 0-10V, 1-5V, digital communication interface as RS485 or RS232
- Dual 6-digit LED digital tube shows real-time measurement, peak, output current value, I/O status information
- Controller with the upper, middle and lower limits judgment
- I/O 4 input and 6 output, you can customize the input and output port function
- Can be driven by the host computer controller output, can replace part of the alternative PLC
- DC24V power supply, voltage ± 5V, more secure and stable
- Dimension of panel is only 110mm (width) × 92mm (high)

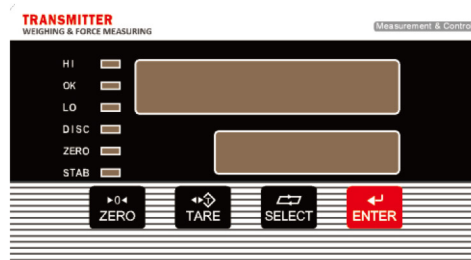
◆ 安装孔开孔尺寸/Installation size



◆ 参数 Specifications 技术指标/Technique

| 参数 | Specifications | 技术指标/Technique |
|---------|-------------------------------------|------------------------------|
| 显示窗口 | Display | 双排6位LED显示 6digits display |
| 可读性 | Readability | 1/90000 |
| 输出线性 | Output linear | <0.002% |
| 综合精度 | Comprehensive accuracy | 优于0.01% |
| A/D转换速度 | A/D Conversion speed | ≤400次/秒 times/second |
| 接受灵敏度 | Accept sensor | -3.6~+3.6 mV/V |
| 输入负载 | Input load | 1~8只350Ω传感器 cells |
| 输出规格 | Output specification | ±10V / 0~10V / 4~20mA |
| 满量程温度漂移 | Temp.effect on sensitivity | ≤10ppm / °C |
| 零点温度漂移 | Temp.effect on zero | ≤10 μV / °C |
| 激励电压 | Nominal range of excitation voltage | 5VDC |
| 电源供给 | Power supply | 24 ± 5VDC |
| 整机功耗 | Power waste | ≤10W |
| 工作温度范围 | Operating temperature range | -20~70°C |
| 单件重量 | Weight approx. | 0.5kg |
| 材料 | Material | Aluminum Alloy (铝合金) |
| 防护等级 | IP Class | IP65 |

◆ 操作面板示意 / Panel buttons



新产品

压向传感器

拉压向传感器

压电力传感器

多维力传感器

称重传感器

张力传感器

螺纹力

扭矩传感器

其它定制力传感器

称重模块

仪表模块放大器